



# OTONGA PRIMARY SCHOOL NEWSLETTER

## Te Kura o Tihiōtonga Pānui

*"United by the four winds, we grow stronger together"*  
*"Mā te kōtahitanga e ngā hau e whā, ka kaha whakatupu ngātahi tātau"*



<https://www.facebook.com/OtongaRoadSchool>

105 Otonga Road, Springfield, Rotorua 3015 • Phone: (07) 348-6443 • Email: [otonga@otonga.school.nz](mailto:otonga@otonga.school.nz) • Website: [www.otonga.school.nz](http://www.otonga.school.nz) • Principal: Gareth Cunliffe

Date: 19<sup>th</sup> July 2023

Newsletter No: 21

### Term 3 Diary:

(Please note dates/events may be added or changed without prior notice)

20 Jul	Matariki Celebration Otonga PTA Meeting 6pm Staffroom
21 Jul	Y4 Ako Korerū - Te Puia Trip 9:45am-12:30pm
24-26 Jul	Y1-3 Crossing Education
28 Jul	Hui a Kura 11:45am-12:20pm – Hosted by Room 2 Ako Korerū
2-4 Aug	Y5 Ako Kārearea - Marae Noho
3 Aug	CBOP Interschool Amazing Race Planting Day – Trees for Survival
8 Aug	R11 Robotics Museum Course 9-10am R12 Robotics Museum Course 10:30-11:30am
9 Aug	School Photos with PhotoLife
10 Aug	Y3 Ako Ruru - Rippa Rugby in Schools Y4 Ako Korerū - Science Roadshow at RIS Y5-6 Tennis in Schools – Give Tennis a Go R13 Robotics Museum Course 9-10am R14 Robotics Museum Course 10:30-11:30am
11 Aug	Y1 & 4 Tennis in Schools – Give Tennis a Go Hui a Kura 11:45am-12:20pm – Hosted by Room 1 Ako Korerū
17 Aug	Y1 & 3 Tennis in Schools – Give Tennis a Go
17-30 Aug	Life Education
18 Aug	Y2 Tennis in Schools – Give Tennis a Go
21 Aug	New Entrant Cohort 6 Starts School
24 Aug	Rugby 9's
25 Aug	Rotorua Junior Tough Guy & Gal Challenge Hui a Kura 11:45am-12:20pm – Hosted by Room 3 Ako Korerū

### Term 3 Diary continued:

(Please note dates/events may be added or changed without prior notice)

28 Aug	Y5-6 Bike Safety Eke Haumarū <b>Starts</b> Y4 Ako Korerū – Museum Trip
29 Aug	Y6 Ako Korimako – RIS Orientation Visit 9am-12:30pm BOT Meeting
1 Sep	Y4 Ako Korerū – Museum Trip 9:30-11:30am
6 Sep	Wig Wednesday – Child Cancer Fundraiser
8 Sep	Hui a Kura 11:45am-12:20pm – Hosted by Room 11 Ako Kiwi
9 Sep	Quiz Night
13 Sep	CBOP Winter Sports Field Day
15 Sep	MIGS Gymnastic & Trampoline Competition
22 Sep	Y5-6 Bike Safety Eke Haumarū <b>Ends</b> Hui a Kura 11:45am-12:20pm – Hosted by Room 5 Ako Tui Last Day of Term 3 – School closes at 3pm

### Term Dates 2023:

**Term 3:** Mon 17<sup>th</sup> July – Fri 22<sup>nd</sup> September

**Term 4:** Mon 9<sup>th</sup> October – Wed 13<sup>th</sup> December (TBC)  
(Labour Day – Monday 23<sup>rd</sup> October)

### New Entrant – Cohort Start Dates 2023:

<b>TERM 3</b>	<b>Cohort 6:</b> Mon 21 <sup>st</sup> August
<b>TERM 4</b>	<b>Cohort 7:</b> Mon 9 <sup>th</sup> October
	<b>Cohort 8:</b> 1 <sup>st</sup> Day of Term 1, 2024 (TBA)

## PRINCIPAL'S REPORT – TERM 3 WEEK 1

Kia Ora Koutou - Dear Parents and Caregivers,

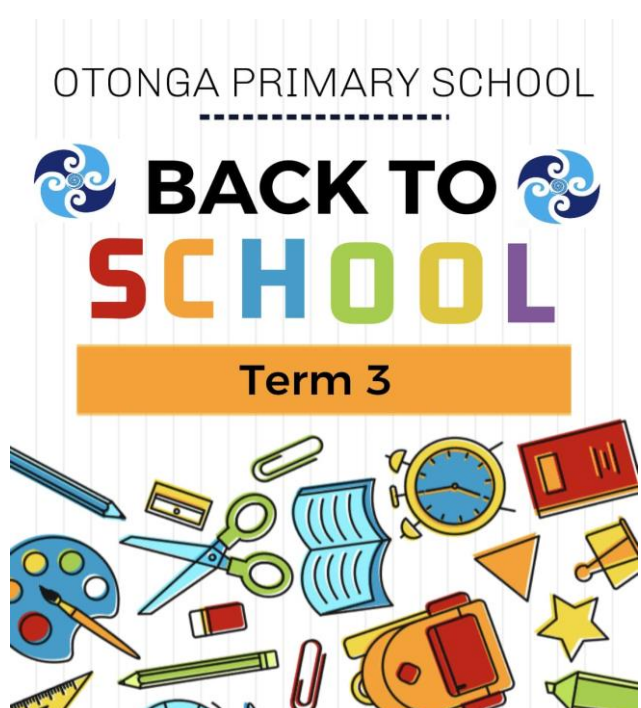
**It is absolutely fantastic to be back at school and even better when the whole school surprised me with a huge birthday celebration!**

The highlight was 550 students and staff singing happy birthday to me and then spending the time with colleagues and friends. To be honest, I think the children enjoyed it even more as everybody in the school got a Mr Whippy Ice Cream in celebration.

I would like to take this opportunity to thank our staff and parents for all of the festivities, presents and birthday wishes. It was very special.

Looking forward to an amazing and positive term!

**Ngā mihi nui**  
**Mr Gareth Cunliffe**





# Happy Birthday Mr Cunliffe





## Welcome to and introducing our new staff...

As you may or may not know, school's nationwide are finding it challenging to get teachers. Teachers leave for various reasons - travel, starting a family, promotion and new challenges. We are really fortunate at Otonga School to have attracted quality teachers. We are building a formidable team of staff who want to be here and teach in our lovely environment.

We are really excited to have Whaea Shannen and Whaea Lizzie join our team. They will be teaching in Room 4 with our new entrant startup class. Their experience at this level (and previously from Tiaki Early Learning Centre) is appreciated and valued and we look forward to working with them.

Whaea Jann and Ms Sarah Best are also joining our team and will be doing teacher release. Mrs Armstrong is helping out too until the end of the year as well as Mr Armstrong and we really appreciate this.

Once again a warm welcome to our new Secretary/Principal PA, **Mrs Andrea Greyling** to Otonga School again. Mrs A is well known to most of us as she was previously one of our learning assistants.

We wish Mrs Katrina Weller and family all of the best with her relocation to Cambridge and thank her for her time here at school.



### Whaea Shannen

Kia ora, my name is Whaea Shannen and I will be teaching the new entrants at Otonga School alongside Whaea Lizzie. I was born and raised in Rotorua and even went to Otonga as a student! So I am feeling super excited to return as a teacher. I am passionate about the outdoors and love being active rain or shine. One of my favourite things to do is watch the sunrise (with a coffee)! Even better if I get to watch it from the top of a mountain. I am looking forward to being a part of the Otonga team and having fun with the tamariki. Whaea Shannen.



### Whaea Lizzie



Kia ora e te whānau, my name is Lizzie and I will be teaching in Room 4 with Whaea Shannen for the rest of the year. I attended Otonga School (many years ago) as did my 18 year old son. It is exciting to be back! I have a particular interest in art, literacy and nature-based education. We are really looking forward to working with your tamariki. Ngā mihi, Whaea Lizzie.

## Whaea Jann

Kia ora e te whānau o Te Kura o Tihiōtonga. Ko Whaea Jann Kieck ahau. I began my teaching career 11 years ago in South Africa, working with students from Year 3 up to Year 8. My husband, our 3 boys and I made the move over to Aotearoa New Zealand in June 2019 and fell in love with Rotorua instantly. In our 4 years here we have soaked in as much as we could of the history and culture of this incredible place and will continue to do so. I look forward to working with the tamariki and their whānau, as well as being part of Team Otonga.



## Ms Best

Kia Ora, My name is Sarah, and I am excited to be working as part of the Otonga whanau. I moved to Rotorua from Auckland last year with my husband Sam. We have two young boys, Arthur and Angus who keep us very busy. Moving to Rotorua has been a big change for us, in both work and lifestyle, but it has bought us so much more time to spend together as a family in the outdoors. I love spending time biking, walking and boating and we are so lucky to be surrounded by numerous beautiful lakes and the forest. I am looking forward to what the rest of the year will bring and continuing to get to know your tamariki. Ms Best.



## WALKING, BIKING AND SCOOTERING

### Benefits:

- Light exercise boosts health and emotional well-being
- Tamariki arrive at school ready to learn
- Helps tamariki learn road safety skills
- Increases independence
- Creates healthy transport habits that are kind to the planet
- Is a fun, low cost activity that can be done with friends and family
- No parking hassles



### Tips:

- Pedestrian crossings are the safest place to cross the road
- Never call children over from the other side of the road
- Getting off your bike and walking across the road is safer
- If you have not walked or biked to school before try a practice run in the weekend

**80% of primary school students say they would like to bike to school**



## DRIVING

- Be prepared to see children walking and biking
- You must stop for people using pedestrian crossings
- Plan your route so you don't have to U-turn or do 3 point turns using driveways on roads with school traffic
- Don't wait for carparks. Park up the road, or arrange to collect your child after 3.10pm when there is less traffic congestion



Reduce your speed to 30km in school zones



## PARKING SAFELY NEAR SCHOOLS

Before and after school are busy times for everyone. Parking rules help to protect our tamariki. Drivers who park illegally put children at risk. Please be considerate of residents and other families when parking.

### You can be fined for illegal parking if you:

- Park across or within 1 metre of a driveway
- Park on a pedestrian crossing
- Park on the footpath or verge
- Park on yellow lines
- Double park

For more information on walking or biking around Rotorua visit:  
[rotorualakescouncil.nz/sharedpathnetwork](http://rotorualakescouncil.nz/sharedpathnetwork)



## ARRIVAL TIMES AT SCHOOL & BEFORE SCHOOL CARE

**Students may only come to school at 8:15am please** as any time before that creates a health and safety issue as there are no teachers available before this time unless in exceptional circumstances. Children will not be allowed into the classrooms until **after 8:15am**. Students arriving early need to be enrolled in before school care. If you need care before school or after school, this service is provided in the hall. To enrol your child or for more information please contact **Leandri** on **027 348 7707** or email [info.otonga@osprograms.co.nz](mailto:info.otonga@osprograms.co.nz)



**OTONGA**  
**Before & Aftercare**

OASCP changes to OSP from 26 June 23

**Before care**  
\$8 per hour  
7:15am to 8:15am  
BREAKFAST INCLUDED

**Aftercare**  
One child \$9 per hour  
Two children \$8.50 per hour  
Three children \$7.50 per hour  
3 pm to 5:30pm  
AFTERNOON TEA INCLUDED

Leandri - 027 348 7707 Sharon - 0274 866 148  
[info.otonga@osprograms.co.nz](mailto:info.otonga@osprograms.co.nz)  
Please contact Leandri for the Before care and Sharon for Aftercare. Leandri will be taking all after hour calls. Thank you.

## LIBRARY & INFORMATION CENTRE NEWS

Welcome back! I hope you all enjoyed your holiday and Matariki celebrations with your families.

Just a reminder to please make sure all overdue books are returned, so that your children can issue a new book this week. 😊

Also, Scholastic brochures will be sent to classrooms today, so check out the great bargains to be had.

They have the following an online only promotion:

- Spend \$30 = 1 free book
- Spend \$50 = 2 free books
- Spend \$70 = 3 free books

There are some great titles starting from as little as \$3.50!

Thank you for your ongoing support!

*Miss Gisby, Assistant Librarian*



**SCHOLASTIC**  
**Book Club LOOP**  
for Parents

**LOOP** is the Scholastic Book Club  
Linked Online Ordering & Payment platform for parents.  
To order and pay for Scholastic Book Club by credit card visit:  
[mybookclub.scholastic.co.nz](https://mybookclub.scholastic.co.nz)

GET IT ON Google play  
Download on the App Store

## OTONGA SPORTS & COMPETITIONS – Registrations Now Open:

### 2023 Rotorua Junior Tough Guy & Gal Challenge

This extreme off road running event takes place on **Friday 25th August** at Lakes Ranch. Year 3-6 boys and girls are invited to compete in this exciting and fun event.

**Cost:** \$35 per student (includes bus & event entry)

**Course:** 1.5km for school years 3 & 4 and  
3km for school years 5 & 6

**Entries Close:** Friday 11th August at 9am

Please read the registration notice for this event, which includes important information on what to wear and bring, when to arrive at school in order to catch the event bus on time, how to register & pay via Kindo and the 'Waiver & Release Statement' which needs to be agreed to in order for your child to compete. This is available under 'Notices' on the SchoolApp or on SeeSaw.

**Registrations need to be completed via KINDO by 9am Friday 11<sup>th</sup> August.**  
(No late entries will be accepted).



## AUTHORSHIP – Room 17

In Room 17 we have been using our Authorship time to write short, sharp pieces which dig deeper and use rich, descriptive vocabulary.

Rohan created this “Mystical Eye” in clay.



We used this as a trigger, with our stories, describing what the eye was attached to as we viewed it through a Keyhole...”

We practised our self-editing, peer sharing for positive feedback, to revisit and add value to the initial sentence. The resulting passages explore all our senses to bring the work alive to the reader.

Rebecca Scott, Y4-6 Literacy Co-ordinator

### The Mysterious Eye.

As I looked through the keyhole I saw a giant sparkly creature that had five evil looking eyes. It was covered with hundreds of gigantic scales. The creature had a razor sharp beak that spewed lava and very strong acid with bones in it. The creature had enormous wings that looked as if they were ripped. I smelt old rotten bodies. It made me spew.



By Tycho Frickey

### As I Looked Through The KeyHole...

I stared very deeply into an eye that was colossal and a glimmering magenta colour. Looking at me I felt a shiver go down my spine lightning fast. But then as I was walking away in the corner of my eye I saw a mysterious figure rushing through the hallway trying to open the door. So I leapt to the key but it was too late. He, or she or even something abnormal was turning the doorknob.. They BARGED!!! Into the door it broke my eardrums and all I heard was weird ringing. The abnormal creature was screaming ferociously and jumping around the room. I felt its vibration on the ground. I got a big fright. I went to the counter and hid behind the counter. The ringing in my ears got even louder it was like a horde of bulls passing. The creature started to look for me, it was super hard to not scream in pain, my ears were so red. I stayed dead quiet. I didn't dare make a sound. All I did was peak one eye at it. I started to feel light headed. Then I fainted...

by Sakidu

### The Keyhole

As I looked into the ruined keyhole, I shivered in fear. At first I looked into a ferocious and glowing eye that was staring at me. The eye was as green as a shiny emerald. The pupil was as red as glistening red blood. It made me feel nervous. I spied the blue claws peeking through as it scraped the wooden door. I gulped as the claws tried to blast through the door...

Was it a dream? as I soon walked out of the hallway and returned home.

By Austin



### As I looked through the Keyhole

As I looked through the glittering keyhole I saw something that made me shiver. It was a quivering eye. At first I was scared, but then I saw it was cold so I opened the door and saw it was a dragon with wings as big as a house. When it put its wings on its huge back they disappeared into its skin. It came inside and sat on the couch with its legs crossed and stared at me. I felt terrified!

By MILAN ZIVALJEVIC







# Matariki Celebration

Kia Ora Otonga Primary School Whānau,  
We are hosting a  
Matariki Morning Celebration and would like you to attend

This is a School House event, so Tamariki will need to wear their  
house colours please.

Enjoy engaging in Matariki Art, Games, Waiata,  
Enviro School and a Sausage Sizzle

The PTA will be doing a Sausage Sizzle fundraiser on this day, \$2 per Sausage. Please  
pre order with your child's classroom teacher. Money and order form to them before  
Tuesday 18th July. If you are joining us on this day you are also welcome to order a  
sausage... or two. Please complete the order form attached and return with the money.

When: Week 1 Term 3, Thursday 20th July.

Time: 9.15am - 12.15 pm

Where: Otonga Primary School Hall

**Matariki  
and our  
tamariki**



## SCHOOLDocs

We invite you to view/review our school policies at <https://otonga.schooldocs.co.nz> (Note that there is no "www.")  
Our **username** is: **otonga** and **password** is: **fourwinds**

### SchoolDocs Policies and Procedures Instructions for Reviewers

1. Follow the link to each policy.
2. Read the policy.
3. Click the red Policy Review icon at the right-hand top corner of the page. A new screen will appear.
4. Select your role (board member, staff member, or parent/caregiver) from the drop-down list.
5. Enter your name (optional).
6. Submit your ratings and comments.  
If you don't have internet access, school office staff can easily provide you with printed copies of the policy and the [review form](#).

### Term 3 review topics

#### Curriculum and Student Achievement

- |  |              |
|--|--------------|
| • <b>Inclusive Education</b>           | Board review |
| • <b>Māori Educational Success</b>     | Board review |
| • <b>Learning Support</b>              | Board review |
| • <b>Learning Support Coordination</b> |              |
| • <b>Identify Learning Support</b>     |              |
| • <b>Gifted Learners</b>               |              |

## COMMUNITY EVENTS, NOTICES & SERVICES

### After School Painting, Illustrating and Mosaic Classes With Janet Keen

Thursdays: 3:30pm to 4:30pm or 4:35pm to 5:35pm. Enrolling new people now. Ages 7 and upwards welcome. Adults at kids prices. 374 Clayton Road, Rotorua. Text Janet on 027 3513887 for more details.  
Email: [janet@jkeen.net](mailto:janet@jkeen.net)



## Taekwondo Term #3/ 2023

Olympic martial art sport (& self-defense)  
**(Join @ New members welcome)**



*Build Awareness, confidence, flexibility, strengths and respectful mentality.  
Taekwondo helps young individuals to grow stronger while it suits all ages.  
Enjoy the discipline, fun and friendly environment, and learn from well-respected  
Taekwondo Master (original NZ Taekwondo federation) and instructors.*

#### Locations:

- Session 1:** Otonga School Hall Otonga Rd. Rotorua \*  
**Mondays 6:30 to 7:20 pm (Beginners) & to 8 pm (colour belts)**
- Session 2:** Westbrook School Hall, Malfroy Rd. Rotorua \*  
**Fridays 6:30 to 7:20 pm (Beginners) & to 8 pm (colour belts)**

**Class/Term Westbrook School Hall: Start date: Friday 21<sup>st</sup> July 2023**

**Class/Term Otonga School Hall: Start date: Monday 24<sup>th</sup> July 2023**

\*\*\*\*\*

#### **Enrolment / Contact / Information:**

**Email:** [Taekwondo.Training.m@gmail.com](mailto:Taekwondo.Training.m@gmail.com)

**Text: 02040 797219**



*\*Attending both sessions are highly recommended, however enrolling for one selected session is acceptable.  
@ WTF style uniform can be purchased from online stores like Trademe or Budokan store in lake road Rotorua.*



## School 1km zones and creating a consistent approach

Our road safety surveys show one of the main reasons families drive is because they don't feel safe letting their children walk or bike to and from school. Research also shows a reasonable walking catchment for primary school students is 1km.

After considering several different approaches to creating safe speeds around schools, a recommendation of a city-wide approach for speed management with 30km/h for local streets and the CBD was proposed.

This approach creates a walkable catchment of 1km for all Rotorua schools which extends the safety and environmental benefits to early childcare education centres and kōhanga reo as well as local shopping areas.

## The statistics

Mistakes happen. Speed is the difference between someone being unharmed, seriously injured or killed.

Road safety statistics indicate that more people die on New Zealand roads per head of population than in similar countries.



By working together to create safer roads for all we can have positive environmental outcomes through encouraging the uptake of healthy transport modes such as walking, cycling and public transport.

**Have your say**  
For detailed information and maps visit [rotorualakescouncil.nz/smp](http://rotorualakescouncil.nz/smp)



Scan for more info!



## PROPOSED CHANGES TO LOCAL SPEED LIMITS

### MAKING ROTORUA STREETS SAFER

**OUR STREETS AND ROADS ARE FOR ALL**  
We want everyone to get to where they're going safely. A small change in speed can make a big difference in saving lives and preventing serious injuries.



## What's happening?

Our environments have changed since speed limits were originally set - 93% of Rotorua streets have limits higher than the safe and appropriate speeds recommended.

Rotorua Lakes Council is proposing 30km/h speed limits on some streets. In the urban area these changes will mostly be around schools and the CBD.

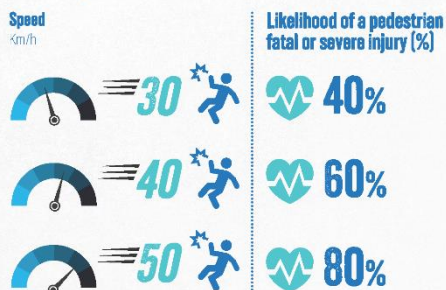
## Why?

Safe speeds are a priority issue being addressed at a national level as part of the government's 'Road to Zero' road safety strategy.

Road to Zero sets a target for reducing deaths and serious injuries by 40 percent by 2030. In line with this, Council is developing a ten-year Speed Management Plan to make our streets safer.

We want everyone who calls Rotorua home, and visitors who pass through, to be safe when using our streets and roads. That means we need the right speeds on the right roads.

## Survivability of crashes at different speeds



Survivability rates vary significantly based on a number of factors and scenarios. Rotorua Lakes Council takes a preventative approach with respect to the survivability of people walking and cycling. These values were obtained by incorporating pedestrian fatal and pedestrian severe injury data as collated by Scott and Mackie. "Speed/injury risk curves". Mackie Research & Consulting, 2018.

## Which streets/roads will have lower speed limits?

### Some streets/roads will have a speed change:

- Speed limits outside of schools will be reduced to 30km/h (a legislative requirement).
- Streets/roads that are residential areas where people, especially children, should be able to walk and cycle safely, will be lowered to 30km/h. These streets are called 'Local streets' (Examples of our local streets are Haumoana St, Kea St and Larcy Rd).
- Streets within the CBD will be lowered to 30km/h.
- Speeds may be lowered to 80km/h for rural roads that are straighter and wider or 60km/h for roads that are twisty and narrow.
- Speed limits for streets/roads within Mamaku and Reporoa will be lowered to 30km/h, in line with 'Local streets'.

### Many streets will stay the same:

- Speeds on our larger and busier urban streets will remain 50km/h. These streets are called 'Urban connectors' e.g. Sunset Rd, Devon St, Clayton Rd, Tarawera Rd and Fenton St.
- All speed limits on state highways are set by Waka Kotahi. In the urban area, state highways include Te Ngae Rd, Old Taupo Rd and Amohau St. Schools on state highways will have their speed changes made by Waka Kotahi in line with the legislation and the state highway Speed Management Plan.

\* Where schools exist on these streets the speed will be 30km/h in the school zone.



## How will this affect me?

Because a large portion of journeys happen along our 'Urban connector' roads, trip times for drivers will increase by less than two minutes in most cases.

### For example:

A trip from Thomas Cres to Rotorua Library would likely increase by just under one minute.



Calming our streets can help create a different urban environment where people can better share the space with vehicles. Walking and cycling becomes safer and more attractive for all.



# PROPOSED CHANGES TO LOCAL SPEED LIMITS MAKING ROTORUA STREETS SAFER

We're proposing 30km/h speed limits on streets around schools and the CBD.

We want everyone who calls Rotorua home and visitors who pass through to be safe when using our streets and roads.

HAVE YOUR SAY  
rotorualakescouncil.nz/smp



Scan for  
more info!

30

93%

of Rotorua streets have limits higher than the safe and appropriate speeds recommended.



ROTORUA LAKES COUNCIL  
Te Kaitiaki o ngā Taiohi o Rotorua

WAKA KOTAHİ  
NZ TRANSPORT  
AGENCY



## The Great Te Aka Mauri Winter Reading Challenge

# THE GREAT TE AKA MAURI WINTER READING CHALLENGE

24 JUNE – 31 JULY 2023



### The Great Te Aka Mauri Winter Reading Challenge

FOR CHILDREN UP TO 18 YEARS

As you read, track your progress on the map of Lake Rotorua and cross your time off as you go (each marker equals 15 minutes of reading). Read for a minimum of six hours to receive a certificate and to go into the draw to win great prizes. We're encouraging grown-ups to get involved too, so ask them to read to you. It's great fun and counts towards your reading hours. PLUS: if you read more than 12 hours you will automatically be entered into a bonus prize draw!

Please complete this sheet and return it to Rotorua Library, Te Aka Mauri.

All entries must be returned to Rotorua Library by 5.30pm, Monday 31st July 2023



Central Kids

We all grow together

Ka tūpu kotahi tātou

### Jackson Park Kindergarten

#### HOURS AND FEES

Monday - Friday 8.45am - 2.45pm

ALL TAMARIKI WELCOME  
2 years - school age

\$5 per hour (after  
government entitlements)  
+ extra support available

#### ENROL NOW!

We have spaces available for your  
tamariki to start right away.

#### CONTACT US



07 348 1979  
021 195 4586



66 Springfield Road  
Rotorua 3015



jacksonpark@centralkids.org.nz  
www.centralkids.org.nz

Nau mai, haere mai  
Call in and see us today!



Central Kids  
We all grow together  
Ka tūpu kotahi tātou



IN THE BAY TRUST  
PRESENTS

# PASIFIKA FESTIVAL IN THE BAY 2023

PASIFIKABOP FACEBOOK.COM/PASIFIKABOP @PASIFIKA\_BOP

SUPPORTED BY

creative nz  
ARTS COUNCIL OF NEW ZEALAND - TE AOTAKA

SATURDAY 28 OCTOBER  
FROM 10 AM  
MOUNT MAUNGANUI COLLEGE

PERFORMANCES  
ACTIVITIES  
FOOD

