

[illegible]

Dispositions are our habits of thinking and doing.

Curiosity is a disposition - it is not a skill or knowledge but a tendency to respond to an experience in a certain way (Carr, 1997).

After the feedback from parents in our community collaboration survey, teachers have been doing a lot of brainstorming and discussion in small groups.

“What does an ideal Otonga School graduate look like?

What sorts of attributes should our tamariki have?

What learning habits would they possess?

What kind of learner would they be?”

We are now getting student voice around showing curiosity, being a collaborator, communicator, critical and creative thinker.



Watch this space as it is exciting work.

**Ngā mihi nui
Mr Gareth Cunliffe**

Staying Healthy this Winter

As always, we want to keep our students and teachers as safe as possible from the harms from illness and to have as much learning as we can. Things we do at school that will help to prevent seasonal illnesses include:

- regularly washing hands
- using well-ventilated spaces
- covering coughs and sneezes
- cleaning and disinfecting high-touch surfaces regularly

You can do the same at home and hopefully together, we will keep our community healthy this winter.

[Immunisation Advisory Centre](#)



The Niggles Process

As parents we all have times when we need to share our niggles, and it is often best to do so before they escalate into something larger. It is important for the school to know parents' concerns as we value the partnership between home and school.

To help parents know who to talk to about any issues the process is outlined below.

There are a number of options available to you.

- If it is in relation to something that is happening in the classroom, at playtime etc., the first point of contact **must be the classroom teacher**.
- If you are not satisfied with the outcome there you should talk to the relevant Ako Team Leader or an Assistant Principal. They, along with the Principal, make up the leadership team of the school.
- If you are not satisfied with the outcome after talking to the Ako Leader or it is a more generic issue you should talk to the Principal.
- If it is a generic issue, or you are still not satisfied after talking to the Principal, you should contact the Board's Presiding Member by sending a letter outlining your concerns for consideration and discussion.

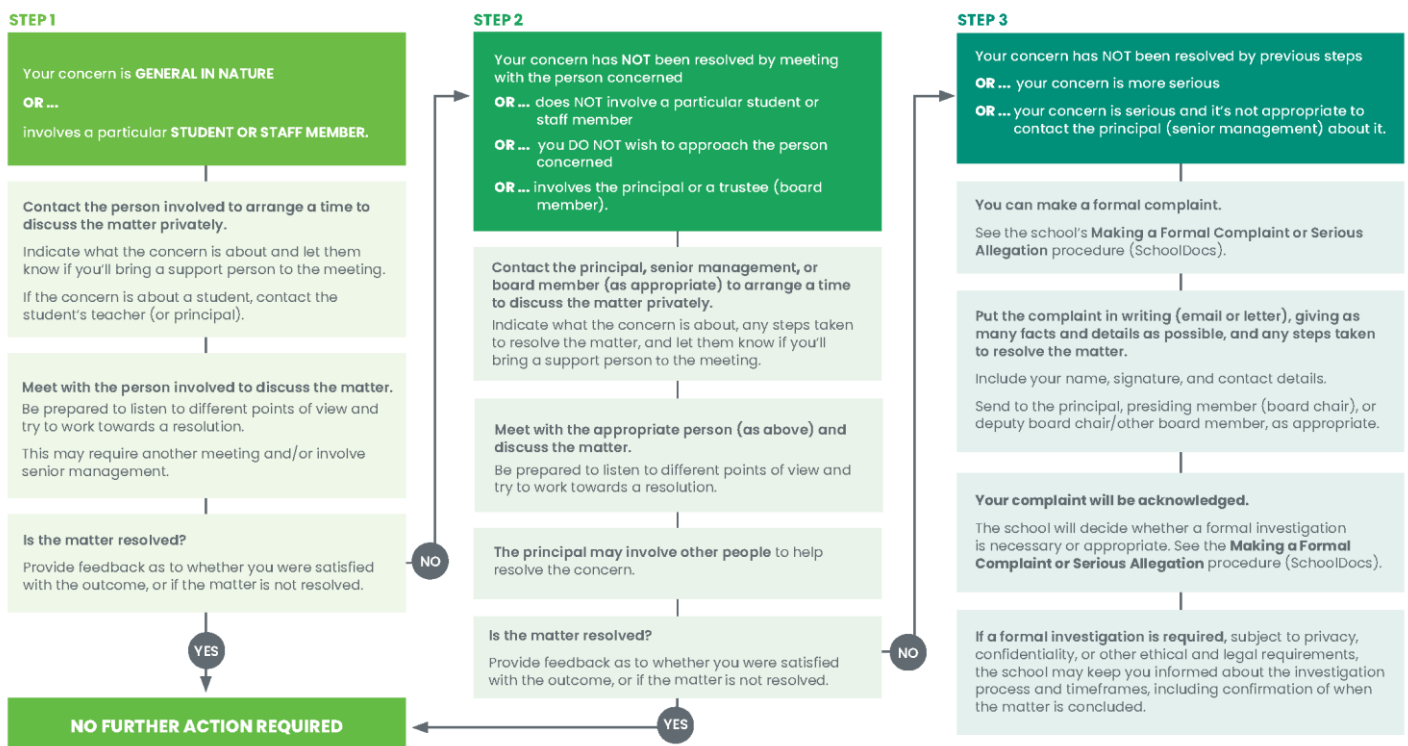
It is important to remember that we all have the children's best interests at heart.

Thank you to our parents who appreciate and respect us as people, value what we do for our children, and trust us as the professional leaders. It is much appreciated. It is this partnership and people like you who make all of our hard work worthwhile in creating the best learning environment for your tamariki.



Concerns and Complaints Process

Most concerns can be resolved informally by discussions with the people involved.



NOTE: Unless there are exceptional circumstances, a complaint will not be considered unless the correct process has been followed. You may be directed back to the staff member or principal to follow the process.

Once a formal complaint has been resolved, there are no further avenues to pursue the complaint with the school.

If you are not satisfied with the outcome of your complaint, you are encouraged to take advice and may wish to consider contacting other agencies. See the school's **Making a Formal Complaint or Serious Allegation** procedure (SchoolDocs).

ARRIVAL TIMES AT SCHOOL & BEFORE SCHOOL CARE

Students may only come to school at 8:15am please as any time before that creates a health and safety issue as there are no teachers available before this time unless in exceptional circumstances.

Children will not be allowed into the classrooms until **after 8:15am**.

Students arriving early need to be enrolled in before school care.

If you need care before school or after school, this service is provided in the hall. To enrol your child or for more information please contact **Leandri** on **027 348 7707** or email info.otonga@osprograms.co.nz



OTONGA
Before & Aftercare

OASCP changes to OSP from 26 June 23

Before care
\$8 per hour
7:15am to 8:15am
BREAKFAST INCLUDED

Aftercare
One child \$9 per hour
Two children \$8.50 per hour
Three children \$7.50 per hour
3 pm to 5:30pm
AFTERNOON TEA INCLUDED

Leandri - 027 348 7707 Sharon - 0274 866 148
info.otonga@osprograms.co.nz
Please contact Leandri for the Before care and Sharon for Aftercare. Leandri will be taking all after hour calls. Thank you.

OTONGA PTA – CHOCOLATE FUNDRAISER

Hey there, fabulous parents and whanau! We're rolling in with some exciting news that's bound to satisfy your sweet tooth and fill our playground with laughter! Our super-duper PTA is jazzed to announce the mouthwatering 🍫 Chocolate Fundraiser 🍫 Extravaganza!

Drumroll, please... 🥁 Let's raise the bar (literally!) and amp up the playground game for our little adventurers. We're on a mission to deck out the play space with brand-spankin' new playground equipment, and we need YOUR help to make it happen!

Here's the scoop: on Thursday, 3rd August a delicious box bursting with 36 luscious Whittaker's chocolate bars landed in the eager hands of the eldest child in each family. Talk about a tempting treat! 🍫🍫

Now, let's talk business - each of these delectable delights can be yours for just a measly \$2. Yes, you read that right! Two dollars for a piece of chocolate heaven AND a chance to contribute to an awesome cause. Cha-ching!

Mark those calendars, folks! 📅 We're rounding up all the money and any unopened bars of chocolate with open arms until **Friday, 25th August 2023**. Time to channel your inner chocolate-selling superhero!

But wait, there's more! 🌟 We're throwing a chocolate-filled carnival of prizes for our rockstar sales champs. Not only that, but the class with the biggest chocolate-selling mojo will also snag a well-deserved crown of glory. Who's ready to bring their A-game? 🏆🍫

Got questions? Need a high-five? No worries! Our fantastic PTA team will be hanging out in the office every morning, eager to collect your moolah and any leftover chocolate treasures. We've got your back, every step of the way! And hey, if you're thinking, "I want MORE of that chocolaty goodness," we're one step ahead. More boxes are in the works, so keep those taste buds tingling! Let's make this fundraiser a memory worth savouring, all while giving our ākonga the playground paradise they deserve.

🍫 Chocolate power, activate! 🍫🍫


Whittaker's
SINCE 1896




AUTHORSHIP – Room 22

In our authorship lessons we have been learning to focus on important moments in time that capture an aspect of the people in our life. We are using 'show not tell' and precise verbs.

Rebecca Scott, Y4-6 Literacy Co-ordinator



My Mum Hairdressing

 **Listen**

My Mum is like other mums, you know cooking, cleaning but my Mum enjoys hairdressing. I can tell as she laughs and smiles during a trim. She love communicating to the customers.

She pulls out her clippers and sprays little pieces as hair falls to the ground like snow.
The spray sprizes onto hair, slowly dripping.

She sometimes dyes purple, blue or whatever they like.

My Mum Hairdressing

Nina Boylen

Mums Cooking

I like to watch my mum cook. She is well focussed at cooking. She would slap me in the face if I did something wrong. My mum is the best cook. I love how she puts all her love into her masterpiece. She loves cooking for me and my family, that's why she is the best cook.

Meet Patel

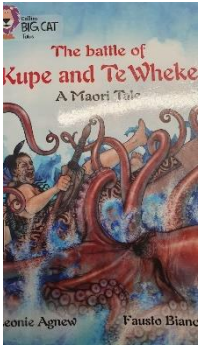
My poem about my dad

My dad is a good cook, well that's what I think, not my mum.

My dad always takes us to the golf or shop. He hates being alone. And my dad always thinks he is right, but he always gets proven wrong. I don't know what my dad does in his free time but I do know one thing: he sleeps and when he does it is like a fire alarm. My dad makes me smile every day. When he gets food in his beard, it makes me smile even more.

Bailee Tauilili Pelesasa

AWESOME Authorship



Journeying across the Ocean

In Kereru Ako we have been exploring the legend of Kupe and the arrival of early Maori in Aotearoa from Hawaiki. We have been **listening** to various versions of the legend and **thinking** about what it would have been like to go on such a journey. Kereru Ako had some great sessions **role playing** the journey and arrival in Aotearoa. This story became an invitation to explore **imaginary worlds of adventure** and **discovery** of new lands.

Construction is an urge that our students love. Using the Magic Play Box construction is on a large scale. Using **communication and collaboration skills** to build a waka also involved values like **Manawanui (perseverance)**. **Estimation** of how many people would fit on the waka and how each person would be comfortable on the journey, needed **counting and multiplication skills**. **Planning** what would be needed on the journey required **writing lists**. **Gathering and transporting** imaginary goods for the journey, food, water, animals needed to be collected in containers. Many villages were created, huts, hammocks and imaginary fires were built. Fishing rods and nets were needed to catch food, some students learnt how to tie a knot!



Kupe encountered a Giant Wheke (octopus) on his journey and a group of students needed to create the giant monster. They **read books** to research the **size** and used string and rulers to create curved lines to make the tentacles, putting into practise **measurement** skills learned earlier in the year. Then **patterning** was used to create the suckers on the tentacles. The use of various materials in creative ways to bring the wheke alive. Other sea creatures such as fish were drawn using chalk, books and posters were used to learn about different fish and sea creatures.



Chalk was used to represent Aotearoa and a sheet was used to create 'the long white cloud'. Students prepared real food by wrapping potatoes in tin foil, these were cooked in the ovens and eaten around a real fire. It was a great experience of **whanautanga**, being part of our school family, and sharing food. **Watching fire** is an urge that benefits from a safe outlet.

The dramatisation of the events allowed children to **explore emotions and thoughts** of setting out on a journey. The battle against the wheke was a fun way to **explore the urge of battle and working in a group towards a common foe**. Arriving safely in the new land was a triumphant occasion but then the future of settling a new land had to be considered!



Tree Planting Day

Once again, our tamariki from Te Kura o Tihitōtonga have made us proud. Last Thursday a group of year 6 students braved this fresh morning and planted approximately 450 native trees which we have been growing at kura since last year. They all did an amazing job.

These trees were grown from seeds collected locally and looked after by our rangatahi, with support from Trees for survival.

Thank you also to Mr Wood, Mr G, Matua Joe and Whaea Louise for helping us today. 🧡🧡



Whānau Hui

Kia Hiwa Ra!

Kia Hiwa Ra!

Kia ora e te Whānau

In response to feedback received from our community collaboration survey, we have used the information to identify where we would like to build on what we do in the area of Cultural Māori Educational Success.

Te Kura o Tihiōtonga would like to hold a whānau hui and we welcome all whānau to come along on **Tuesday 22nd August at 6pm**. We will provide kai in the staffroom and get together in a relaxed setting, to discuss how we can best support our learners in Te Ao Māori and to ensure success for Māori as Māori.

Together, we can nurture our cultural responsiveness as teachers and learners and we would love to have our whānau come along and be part of these discussions.

To RSVP and to ask any questions, please get in touch with Whaea

Arihi aharvey@otonga.school.nz or Whaea Sheena ssearle@otonga.school.nz or Mr Gareth Cunliffe gcunliffe@otonga.school.nz

Kei te tumanako mātou ki te kite i a koutou. We look forward to seeing you there!

OTONGA SPORTS & COMPETITIONS – Registrations Now Open:

2023 Rotorua Junior Tough Guy & Gal Challenge

This extreme off road running event takes place on **Friday 25th August** at Lakes Ranch. Year 3-6 boys and girls are invited to compete in this exciting and fun event.

Cost: \$35 per student (includes bus & event entry)

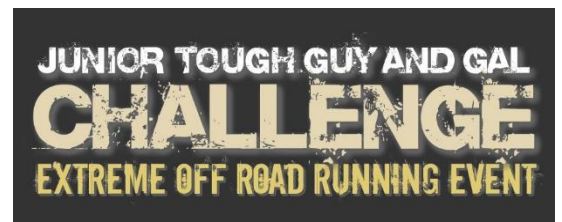
Course: 1.5km for school years 3 & 4 and
3km for school years 5 & 6

Entries Close: Friday 11th August at 9am

Please read the registration notice for this event, which includes important information on what to wear and bring, when to arrive at school in order to catch the event bus on time, how to register & pay via Kindo and the 'Waiver & Release Statement' which needs to be agreed to in order for your child to compete. This is available under 'Notices' on the SchoolApp or on SeeSaw.

Registrations need to be completed via KINDO by 9am Friday 11th August.

(No late entries will be accepted).



Golf Fluro Fun Day - Year 1 to 6

This event is open to year 1-6 boys and girls.

Event Date: Tuesday 29th August 2023

Venue: Rotorua Golf Club

Time: 9:00am to 11:30am

Cost: \$5 per player

This is a fun day out to learn new skills and enjoy a day out with your friends! Teams of 4 students, Fluro Dress-up, Great Spot Prizes.



Please read the registration notice for this event, which includes important information on the format for the day, what to wear and bring etc and how to register & pay via Kindo. This is available under 'Notices' on the SchoolApp or on SeeSaw.

Please note adults will need to take children to and from the event, plus each team must be accompanied/supervised by an adult throughout the duration of the event.

Registrations need to be completed via KINDO by 9am Friday 18th August.
(No late entries will be accepted).

Rip, Grip & Whip

This a mountain bike event available to year 4-6 boys & girls.

Event Date: Tuesday 19th September 2023

Venue: Waipa Mountain Bike Park

Time: 8:30am onwards

Cost: \$5 per student



IMPORTANT NOTE: All children that registered for the Rip, Grip & Whip event which was meant to be held on the 9th May 2023 are automatically registered for the new date of 19th September 2023. Please do not register again. **This is an opportunity for anyone that didn't register the first time to register now.**

Please read the registration notice for this event, which includes important information on what to wear and bring, course information and how to register & pay via Kindo. This is available under 'Notices' on the SchoolApp or on SeeSaw.

Registrations need to be completed via KINDO by 9am Wednesday 6th September.
(No late entries will be accepted).

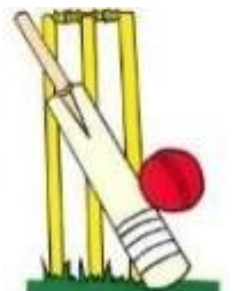
Cricket – Term 4

Incrediball Cricket (Year 3 to 5):

- Games held **Thursday, 3:45 pm till 5 pm** (approx.) at **Smallbone Park**, Devon Street.
- Starts on **26th October** through until **14th December 2023**
- **Cost is \$35 per player.**
- Incrediball teams are **required to have a coach and someone to score/umpire.**

Harrow Hardball Cricket (Year 4 to 6):

- HARD cricket ball, wooden bats and protective gear (helmets, gloves, batting pads etc) are used.
- Suited for children who have already played Incrediball Cricket or who have well-developed hand-eye coordination.
- Begins on **27th October** until **14th December 2023** and **resumes in late January 2024** (2024 start date tbc).
- The cost for hardball cricket is **\$70 per player** for the whole Summer 2023-24 season.
- Teams are **required to have a coach and someone to score/umpire.**



Please read the registration notice for this event, which includes important information on what to wear, when games will be played etc and how to register & pay via Kindo. This is available under 'Notices' on the SchoolApp or on SeeSaw.

Registrations need to be completed via KINDO by 9am Friday 8th September.
(No late entries will be accepted).

JUMP JAM 4 StarJam

Otonga is taking part in **JUMP JAM 4 StarJam 2023** on **Friday 18th August**. This exciting event will be held at Otonga to raise awareness around disability and promote health and wellness in our community. Please show your support and donate a gold coin and receive a cool StarJam wristband. All funds raised will go to StarJam so they can continue to help young people with disabilities to unleash their potential through the magic of music, dance and performance.



KINDO HELPDESK – Phone 0508 454 636

Kindo recommend that if you are having a problem using KINDO either on your computer or on the mobile phone app, that you contact the Kindo Helpdesk straight away. This way you can explain the exact problem you are having and KINDO can troubleshoot the issue while you are on the phone.



Issues can arise for various reasons, usually they have to do with the web browser (Firefox/Safari/Google Chrome etc) or the app platform (such as Apple iPhone/Android Google Play) being used. Because of this the issues can be quite different and not the same for everyone.

LIBRARY & INFORMATION CENTRE UPDATE

Thank you to those of you who returned overdue Library books last week. We still have many books that are overdue and reminders will be sent to those borrowers tomorrow.

If students have an overdue Library book they are unable to borrow additional titles until the book is returned. Children can return books before school to the *Big Red Returns Box* by the Library door. The Library is also open at lunch time for returning or borrowing books or a quiet read in the Library.

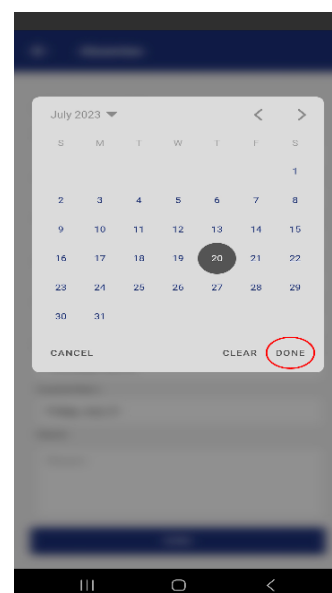
Thank you for supporting your child to return books on time.

Mrs Atkinson, Library manager



OTONGA SCHOOLAPP - ABSENTEE EMAIL FUNCTION

A number of parents have contacted us to advise that they are having issues with our SchoolApp Absentee function, not being able to scroll down further on the screen to be able to type in a reason for the absentee. It seems this problem occurs if you are using an out-of-date version of our SchoolApp or if you are using an **iPhone**. Please make sure you are using the most current version of the SchoolApp, you may need to go to the Apple App Store or Google Play to download this. If you have an iPhone, when entering an absentee email, you need to select an 'Absent From' Date and click DONE before it will allow you to scroll further down. The 'Absent From' date automatically appears in the box, however you still need to click on this box, select a date and then click 'DONE'. If you have any further problems, please let us know.



Football Fans!

This is Amelia Scott (Rm 9) enjoying Japan vs Zambia in Hamilton.

So awesome to have the opportunity to watch the women play, and so inspiring for our young footballers!



Piwakawaka Photo Bomb

In a delightful twist of nature's charm, the renowned piwakawaka, took centre stage during a recent excursion to Mokoia Island. The enchanting moment unfolded last week when a group of eager Otonga students embarked on a unique journey to the island paradise, led by the enthusiastic Whaea Amy. The goal? To aid in the island's conservation efforts by assisting in trap clearing—a task crucial to preserving the island's delicate ecosystem.

As the students ventured onto the tranquil shores of Mokoia Island, little did they know they were about to be treated to an unexpected encounter with one of New Zealand's most beloved avian residents. The piwakawaka, with its distinctive fan-like tail and bold demeanour, decided to grace the students with its presence and participate in a light-hearted game of photo bombing.

Mokoia Island, renowned for its cultural significance and ecological diversity, offers a unique platform for hands-on learning experiences. Beyond its picturesque vistas and stunning scenery, the island has become a sanctuary for countless species of flora and fauna that call it home. The trap clearing activity, a small but vital part of the island's conservation efforts, highlights the commitment of both educators and students to safeguarding the environment for generations to come.

The piwakawaka's playful antics remind us that, amid our conservation efforts and academic pursuits, there's always room for spontaneity and wonder.



SCHOOLDocs

We invite you to view/review our school policies at <https://otonga.schooldocs.co.nz> (Note that there is no "www.")
Our **username** is: **otonga** and **password** is: **fourwinds**

SchoolDocs Policies and Procedures **Instructions for Reviewers**

1. Follow the link to each policy.
2. Read the policy.
3. Click the red Policy Review icon at the right-hand top corner of the page. A new screen will appear.
4. Select your role (board member, staff member, or parent/caregiver) from the drop-down list.
5. Enter your name (optional).
6. Submit your ratings and comments.
If you don't have internet access, school office staff can easily provide you with printed copies of the policy and the [review form](#).

Term 3 review topics

Curriculum and Student Achievement

- | | |
|--|--------------|
| • Inclusive Education | Board review |
| • Māori Educational Success | Board review |
| • Learning Support | Board review |
| • Learning Support Coordination | |
| • Identify Learning Support | |
| • Gifted Learners | |

COMMUNITY EVENTS, NOTICES & SERVICES

After School Painting, Illustrating and Mosaic Classes With Janet Keen

Thursdays: 3:30pm to 4:30pm or 4:35pm to 5:35pm. Enrolling new people now. Ages 7 and upwards welcome. Adults at kids prices. 374 Clayton Road, Rotorua. Text Janet on 027 3513887 for more details.
Email: janet@jkeen.net



Taekwondo Term #3/ 2023 **Olympic martial art sport (& self-defense)** **(Join @ New members welcome)**



*Build Awareness, confidence, flexibility, strengths and respectful mentality.
Taekwondo helps young individuals to grow stronger while it suits all ages.
Enjoy the discipline, fun and friendly environment, and learn from well-respected
Taekwondo Master (original NZ Taekwondo federation) and instructors.*

Locations:

- Session 1:** Otonga School Hall Otonga Rd. Rotorua *
Mondays 6:30 to 7:20 pm (Beginners) & to 8 pm (colour belts)
- Session 2:** Westbrook School Hall, Malfroy Rd. Rotorua *
Fridays 6:30 to 7:20 pm (Beginners) & to 8 pm (colour belts)

Class/Term Westbrook School Hall: Start date: Friday 21st July 2023

Class/Term Otonga School Hall: Start date: Monday 24th July 2023

Enrolment / Contact / Information:

Email: Taekwondo.Training.m@gmail.com

Text: 02040 797219



**Attending both sessions are highly recommended, however enrolling for one selected session is acceptable.
@ WTF style uniform can be purchased from online stores like Trademe or Budokan store in lake road Rotorua.*

YEAR 6 TRANSITION TO ROTORUA INTERMEDIATE

School Orientation Visits

Year 6 students will visit Rotorua Intermediate on Tuesday 29th August or Wednesday 30th August.



Open Evening

Thursday 31st August 5.30pm to 6.30pm in the RI gym - for year 6 students and their whanau.

Year 6 Entrance Testing

Takes place at primary schools during August/September. Catch-up testing is at Rotorua Intermediate on 21st September at 9am.



Enrolments

Enrolments can be done online or in person, these are due in by the end of term 3 - Friday 22nd September.

Whanau Meetings

10th or 11th October - establishing a working and supportive partnership and getting to know your child.



Visit our website www.rotorua-intermediate.org.nz

Please contact Stephanie Chand for further information stephaniec@rotorua-intermediate.org.nz

Children's fishing days

Catch Your First Rainbow Trout - learn how to fly fish!



This fun opportunity, run by the Rotorua Anglers Association, is available to children 6 to 14 years old at Fish & Game Eastern Region, 1130 Paradise Valley Rd, Rotorua.

2023 Fishing dates:

Sunday 6th, August
Sunday 3th, September
Sunday 8th, October
Sunday 5th, November

PRE BOOKING YOUR SPOT IS ESSENTIAL

Bookings, information and news at: www.fishandgame.org.nz/eastern/news/childrens-fishing/



All this for a suggested donation of only \$5.00 per child to help fund the event. Note Eftpos is NOT available - please bring cash

We provide top quality specially designed fishing tackle, a plastic bag to take your catch home, safety glasses and a certificate to celebrate the anglers achievement.

Catch a tagged trout in the pond and WIN a spin rod and reel set from KILWELL.

Ample parking is available on the grass area as you enter the grounds. You are welcome to further explore the grounds via the walkway.

Drinks and barbequed sausages are available to satisfy hungry anglers and parents.

Observe safety rules at all times and DO NOT leave children unattended

Note Eftpos is NOT available - please bring cash



Omahia Te Ngahere Run The Forest

Redwoods (Whakarewarewa Forest)

Location: Laparima Road - Rotorua
All Ages
Range of ticket options available

[BOOK NOW](#)

EVENT DATE
SATURDAY 12 AUGUST
8:00 am - 12:00 am

[Policies >](#)



Keep your body moving this winter with an active weekend away! Experience everything you have to love about Rotorua, including native manuka lined bush trails, lush Redwood Forest, and geothermal landscapes.

Tags / Keywords

Wellbeing Outdoor Run/Walk

Choose the event for you and your running mates:
- 7km Redwoods trail
- 10km Geothermal Traverse
- 21km Pohutu Geyser trail

Expect on course entertainment, finish line vibes, tunes and more.

